

**Collection Screen.
Automatiquement bien.**



Bâtiment Nice Meridia - Nice (06) / © Reichen et Robert & Associés architectes - urbanistes



MERMET 36



Collection Screen

Classic Satiné 5500

MONTANA



ETNA



SAHARA



BORA BORA



Montana - 0201 Blanc Gris



Montana



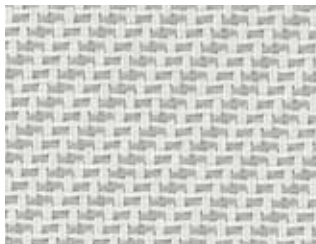
0202 Blanc



(A)

0207 Blanc Perle

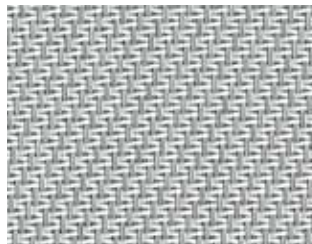
(B)



(A)

M36 020207 Blanc Blanc Perle

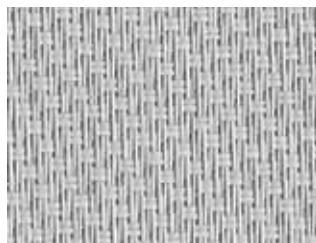
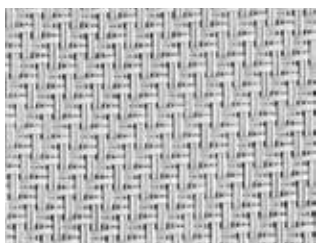
(B)



(A)

0702 Perle Blanc

(B)



0707 Perle



(A)

0701 Perle Gris

(B)



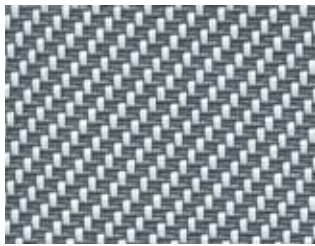
0101 Gris



(A)

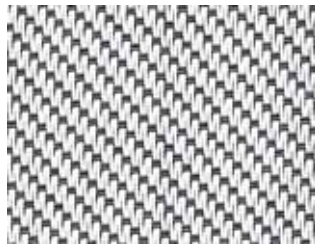
0102 Gris Blanc

(B)

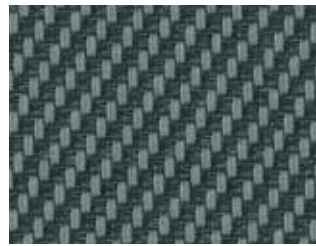


(A)

0201 Blanc Gris

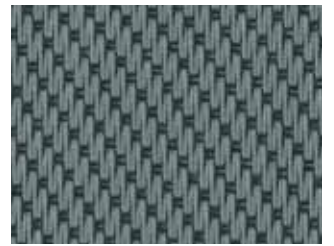


(B)



(A)

0130 Gris Charcoal



(B)

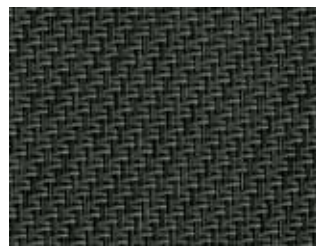


(A)

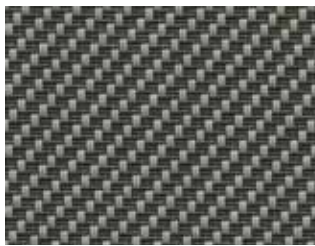
M38 300120 Charcoal Gris Lin



(B)

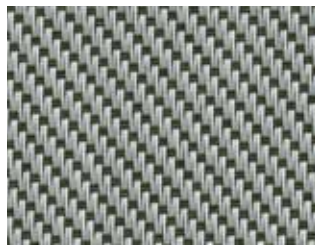


3030 Charcoal



(A)

0706 Perle Bronze



(B)



(A)

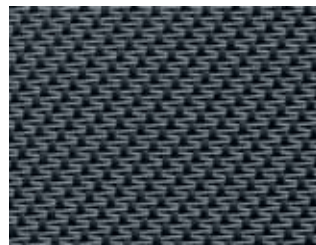
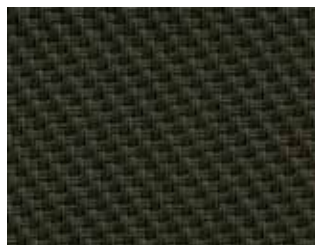
3006 Charcoal Bronze



(B)

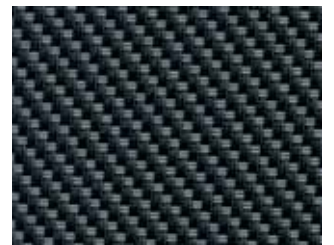


0606 Bronze



(A)

3001 Charcoal Gris



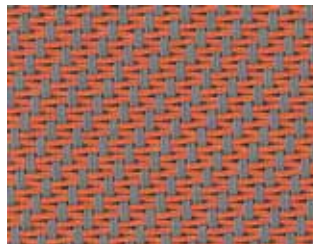
(B)



Etna



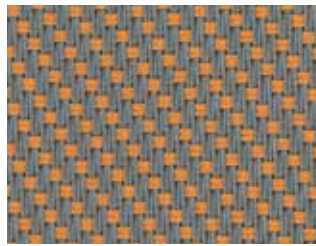
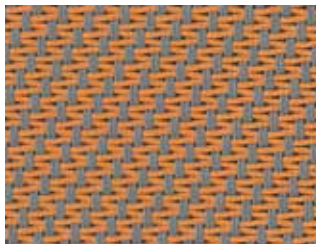
0909 Mandarine



(A)

0109 Gris Mandarine

(B)



(A)

0108 Gris Or

(B)



(A)

M65 100508 Sable Canari Or

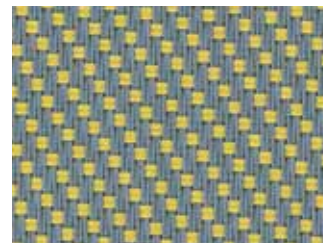
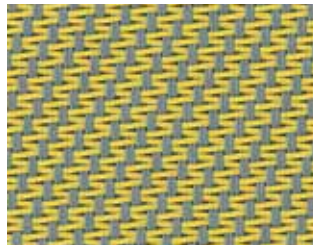
(B)



(A)

M64 100520 Sable Canari Lin

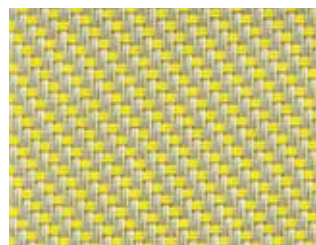
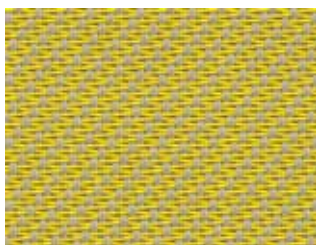
(B)



(A)

0105 Gris Canari

(B)



(A)

0705 Perle Canari

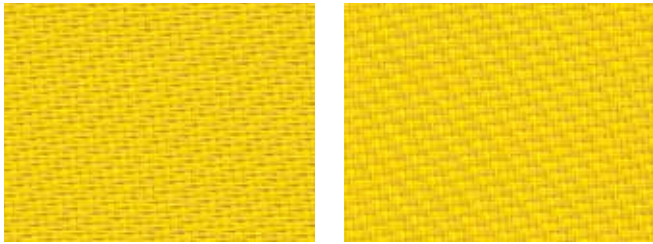
(B)



(A)

0205 Blanc Canari

(B)



0505 Canari



Sahara



(A)

1006 Sable Bronze



(B)



(A)

0110 Gris Sable



(B)



1010 Sable



(A)

0710 Perle Sable



(B)



(A)

M45 070210 Perle Blanc Sable



(B)



(A)

M37 200710 Lin Perle Sable



(B)



(A)

0720 Perle Lin



(B)



(A)

1002 Sable Blanc



(B)

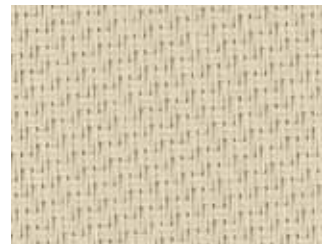


(A)

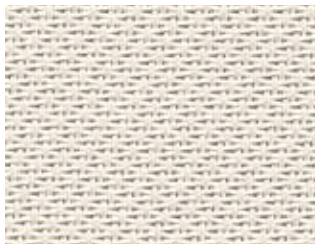
0210 Blanc Sable



(B)



2020 Lin



(A)

2002 Lin Blanc



(B)



(A)

1001 Sable Gris



(B)



(A)

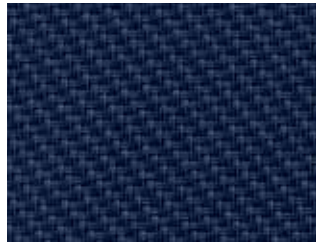
2001 Lin Gris



(B)



Bora Bora



4040 Outremer



(A)

0140 Gris Outremer

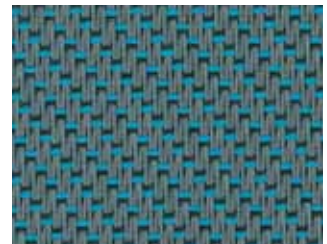
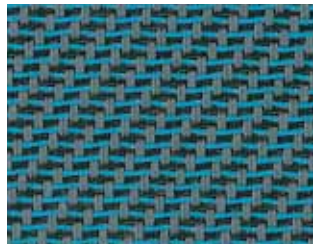
(B)



(A)

0740 Perle Outremer

(B)



(A)

M01 010330 Gris Turquoise Charcoal

(B)



(A)

0103 Gris Turquoise

(B)



(A)

0703 Perle Turquoise

(B)



(A)

M02 020310 Blanc Turquoise Sable

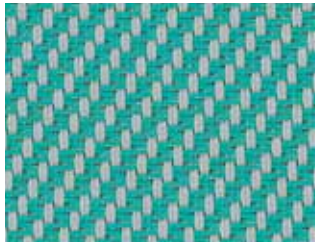
(B)



(A)

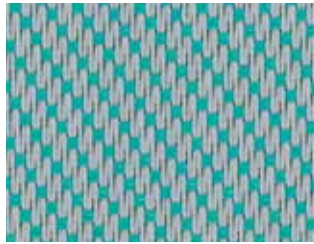
0150 Gris Vert

(B)

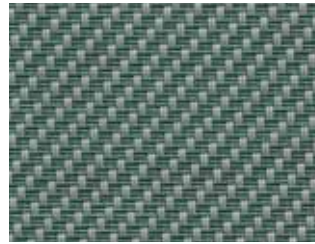


(A)

0750 Perle Vert

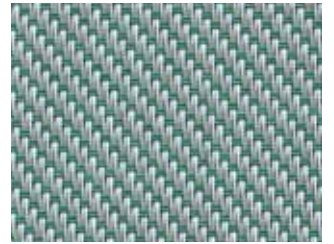


(B)



(A)

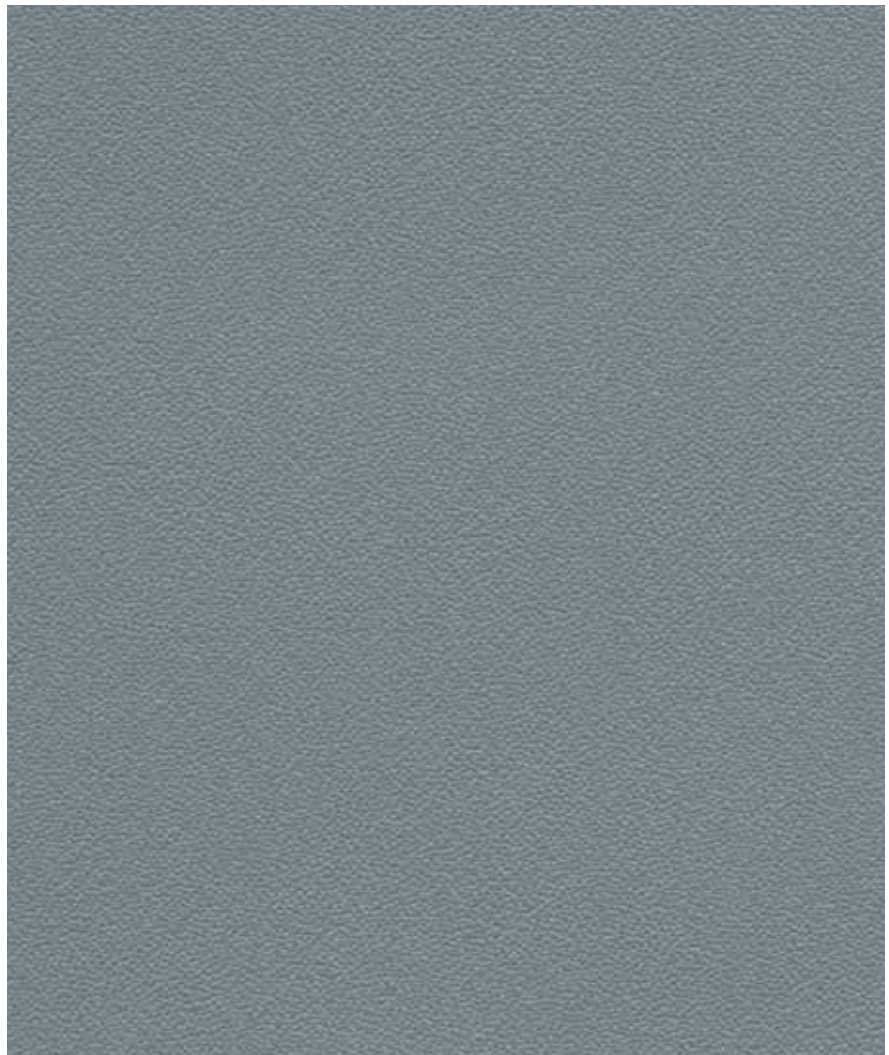
0756 Perle Sapin



(B)



Blackout Dual 13137



E002 Gris / Blanc



E027 Noir / Blanc






E0E2 Marine / Blanc






E002 Gris / Blanc

Les échantillons sont imprimés avec des couleurs standard et peuvent de ce fait légèrement différer des couleurs originales.

PROPRIÉTÉS DE LA TOILE - CLASSIC SATINÉ ET BLACKOUT DUAL 13137

RÉFÉRENCE	FACE	COULEUR			TOILE				FACTEUR SOLAIRE EXTÉRIEUR	FACTEUR SOLAIRE INTÉRIEUR	
					T _e	R _e	A _e	T _v	g-total _e	g-total _i	
MONTANA											
0202		Blanc	0.52	0.75	0.23	0.66	0.11	0.23	0.16	0.36	M1/B1/C-s3,d0
0207	A	Blanc Perle	0.52	0.75	0.13	0.50	0.37	0.11	0.12	0.41	"
	B				0.13	0.57	0.30	0.11	0.11	0.38	"
M36 020207	A	Blanc Blanc Perle	0.52	0.75	0.19	0.58	0.23	0.19	0.15	0.38	"
	B				0.19	0.61	0.20	0.19	0.14	0.37	"
0702	A	Perle Blanc	0.52	0.75	0.15	0.53	0.32	0.14	0.13	0.40	"
	B				0.15	0.47	0.38	0.14	0.13	0.42	"
0707		Perle	0.52	0.75	0.14	0.36	0.50	0.12	0.14	0.45	"
0701	A	Perle Gris	0.52	0.75	0.11	0.25	0.64	0.10	0.13	0.49	"
	B				0.11	0.31	0.58	0.10	0.12	0.47	"
0101		Gris	0.52	0.75	0.10	0.20	0.70	0.08	0.13	0.50	"
0102	A	Gris Blanc	0.52	0.75	0.11	0.41	0.48	0.09	0.12	0.44	"
	B				0.11	0.32	0.57	0.09	0.12	0.47	"
0201	A	Blanc Gris	0.52	0.75	0.14	0.39	0.47	0.11	0.13	0.44	"
	B				0.13	0.50	0.37	0.11	0.12	0.41	"
0130	A	Gris Charcoal	0.52	0.75	0.07	0.12	0.81	0.07	0.12	0.53	"
	B				0.07	0.16	0.77	0.07	0.11	0.52	"
M38 300120	A	Charcoal Gris Lin	0.52	0.75	0.05	0.21	0.74	0.05	0.10	0.50	"
	B				0.05	0.14	0.81	0.05	0.10	0.52	"
3030		Charcoal	0.52	0.75	0.07	0.06	0.87	0.07	0.12	0.54	"
0706	A	Perle Bronze	0.52	0.75	0.09	0.20	0.71	0.08	0.12	0.50	"
	B				0.09	0.28	0.63	0.08	0.12	0.48	"
3006	A	Charcoal Bronze	0.52	0.75	0.04	0.07	0.89	0.04	0.10	0.54	"
	B				0.04	0.07	0.89	0.04	0.10	0.54	"
0606		Bronze	0.52	0.75	0.05	0.09	0.86	0.05	0.11	0.54	"
3001	A	Charcoal Gris	0.52	0.75	0.06	0.14	0.80	0.05	0.11	0.52	"
	B				0.06	0.10	0.84	0.05	0.11	0.54	"
ETNA											
0909		Mandarine	0.52	0.75	0.24	0.42	0.34	0.10	0.19	0.44	M1/B1/C-s3,d0
0109	A	Gris Mandarine	0.52	0.75	0.12	0.29	0.59	0.07	0.13	0.48	"
	B				0.12	0.24	0.64	0.07	0.14	0.49	"
0108	A	Gris Or	0.52	0.75	0.11	0.32	0.57	0.07	0.12	0.47	"
	B				0.11	0.27	0.62	0.07	0.13	0.48	"
M65 100508	A	Sable Canari Or	0.52	0.75	0.15	0.43	0.42	0.10	0.14	0.43	"
	B				0.15	0.42	0.43	0.10	0.14	0.43	"
M64 100520	A	Sable Canari Lin	0.52	0.75	0.18	0.46	0.36	0.14	0.15	0.42	"
	B				0.18	0.44	0.38	0.14	0.15	0.43	"
0105	A	Gris Canari	0.52	0.75	0.11	0.33	0.56	0.08	0.12	0.46	"
	B				0.11	0.28	0.61	0.08	0.13	0.48	"
0705	A	Perle Canari	0.52	0.75	0.17	0.43	0.40	0.14	0.15	0.43	"
	B				0.17	0.43	0.40	0.14	0.15	0.43	"
0205	A	Blanc Canari	0.52	0.75	0.22	0.58	0.20	0.19	0.16	0.38	"
	B				0.22	0.61	0.17	0.19	0.16	0.37	"
0505		Canari	0.52	0.75	0.21	0.52	0.27	0.16	0.16	0.40	"
SAHARA											
1006	A	Sable Bronze	0.52	0.75	0.09	0.19	0.72	0.08	0.12	0.51	M1/B1/C-s3,d0
	B				0.09	0.26	0.65	0.08	0.12	0.48	"
0110	A	Gris Sable	0.52	0.75	0.08	0.31	0.61	0.06	0.11	0.47	"
	B				0.08	0.27	0.65	0.06	0.11	0.48	"
1010		Sable	0.52	0.75	0.13	0.40	0.47	0.08	0.13	0.44	"
0710	A	Perle Sable	0.52	0.75	0.14	0.38	0.48	0.11	0.14	0.45	"
	B				0.14	0.39	0.47	0.11	0.13	0.44	"
M45 070210	A	Perle Blanc Sable	0.52	0.75	0.10	0.46	0.44	0.09	0.11	0.42	"
	B				0.10	0.44	0.46	0.09	0.11	0.43	"
M37 200710	A	Lin Perle Sable	0.52	0.75	0.15	0.45	0.40	0.12	0.13	0.42	"
	B				0.15	0.49	0.36	0.12	0.13	0.41	"
0720	A	Perle Lin	0.52	0.75	0.17	0.45	0.38	0.15	0.15	0.43	"
	B				0.17	0.43	0.40	0.15	0.15	0.42	"

RÉFÉRENCE	FACE	COULEUR			TOILE				FACTEUR SOLAIRE EXTÉRIEUR	FACTEUR SOLAIRE INTÉRIEUR	
					T _e	R _e	A _e	T _v			
1002	A	Sable Blanc	0.52	0.75	0.14	0.54	0.32	0.10	0.12	0.39	M1/B1/C-s3,d0
	B		0.52	0.75	0.14	0.49	0.37	0.10	0.13	0.41	"
0210	A	Blanc Sable	0.52	0.75	0.16	0.50	0.34	0.15	0.14	0.41	"
	B		0.52	0.75	0.16	0.56	0.28	0.15	0.13	0.39	"
2020		Lin	0.52	0.75	0.18	0.52	0.30	0.15	0.15	0.40	"
2002	A	Lin Blanc	0.52	0.75	0.19	0.60	0.21	0.16	0.14	0.38	"
	B		0.52	0.75	0.19	0.58	0.23	0.16	0.15	0.38	"
1001	A	Sable Gris	0.52	0.75	0.11	0.32	0.57	0.08	0.13	0.47	"
	B		0.52	0.75	0.11	0.32	0.57	0.08	0.13	0.47	"
2001	A	Lin Gris	0.52	0.75	0.14	0.34	0.52	0.11	0.14	0.46	"
	B		0.52	0.75	0.14	0.42	0.44	0.11	0.13	0.43	"
BORA BORA											
4040		Outremer	0.52	0.75	0.16	0.28	0.56	0.07	0.16	0.48	M1/B1/C-s3,d0
0140	A	Gris Outremer	0.52	0.75	0.11	0.21	0.68	0.07	0.13	0.50	"
	B		0.52	0.75	0.11	0.21	0.68	0.07	0.13	0.50	"
0740	A	Perle Outremer	0.52	0.75	0.12	0.29	0.59	0.06	0.13	0.48	"
	B		0.52	0.75	0.12	0.32	0.56	0.06	0.13	0.47	"
M01 010330	A	Gris Turquoise Charcoal	0.52	0.75	0.07	0.20	0.73	0.05	0.11	0.50	"
	B		0.52	0.75	0.07	0.20	0.73	0.05	0.11	0.50	"
0103	A	Gris Turquoise	0.52	0.75	0.09	0.29	0.62	0.06	0.11	0.47	"
	B		0.52	0.75	0.09	0.26	0.65	0.06	0.12	0.48	"
0703	A	Perle Turquoise	0.52	0.75	0.13	0.39	0.48	0.08	0.13	0.44	"
	B		0.52	0.75	0.13	0.39	0.48	0.08	0.13	0.44	"
M02 020310	A	Blanc Turquoise Sable	0.52	0.75	0.17	0.52	0.31	0.13	0.14	0.40	"
	B		0.52	0.75	0.17	0.58	0.25	0.13	0.13	0.38	"
0150	A	Gris Vert	0.52	0.75	0.09	0.26	0.65	0.06	0.12	0.48	"
	B		0.52	0.75	0.09	0.23	0.68	0.06	0.12	0.49	"
0750	A	Perle Vert	0.52	0.75	0.13	0.36	0.51	0.11	0.13	0.45	"
	B		0.52	0.75	0.13	0.37	0.50	0.11	0.13	0.45	"
0756	A	Perle Sapin	0.52	0.75	0.12	0.30	0.58	0.09	0.13	0.47	"
	B		0.52	0.75	0.12	0.34	0.54	0.09	0.13	0.46	"
BLACKOUT DUAL 13137											
E027		Noir	0.77	0.53	0	0.05	0.95	0	0.08	0.53	M1
E0E2		Marine	0.77	0.53	0	0.07	0.93	0	0.08	0.53	"
E002		Gris	0.77	0.53	0	0.32	0.68	0	0.06	0.46	"
Verso			0.77	0.53	0	0.74	0.26	0	0.02	0.33	"

Un côté couleur, l'autre toujours blanc.

LÉGENDE

T_e = facteur de transmission solaire
R_e = facteur de réflexion solaire
A_e = facteur d'absorption solaire
T_v = facteur de transmission lumineuse

g-total_e = facteur global de transmission d'énergie pour une protection solaire extérieure „fermée“ avec vitrage, calcul selon SN EN 13363-1-A1, vitrage de référence C selon EN 14501, g = 0,59, U = 1,20 [W/²K]

g-total_i = facteur solaire intérieur - vitrage de type C selon EN 14501, g = 0.59, U = 1.20 [W/m²K]



Epaisseur



Classement au feu
M1/NFP 92-503
B1/DIN 4102-1
Euroclass C-s3,d0/EN13501



Griesser protection solaire – qualité depuis 1882.

Griesser SA
Tänikonstrasse 3
8355 Aadorf
Suisse
www.griessergroup.com

