

**Collection Soltis.
Automatiquement bien.**





Collection Soltis



Soltis 86

Applications

Stores toiles

Stores pour toits de terrasse

Volets

Propriétés

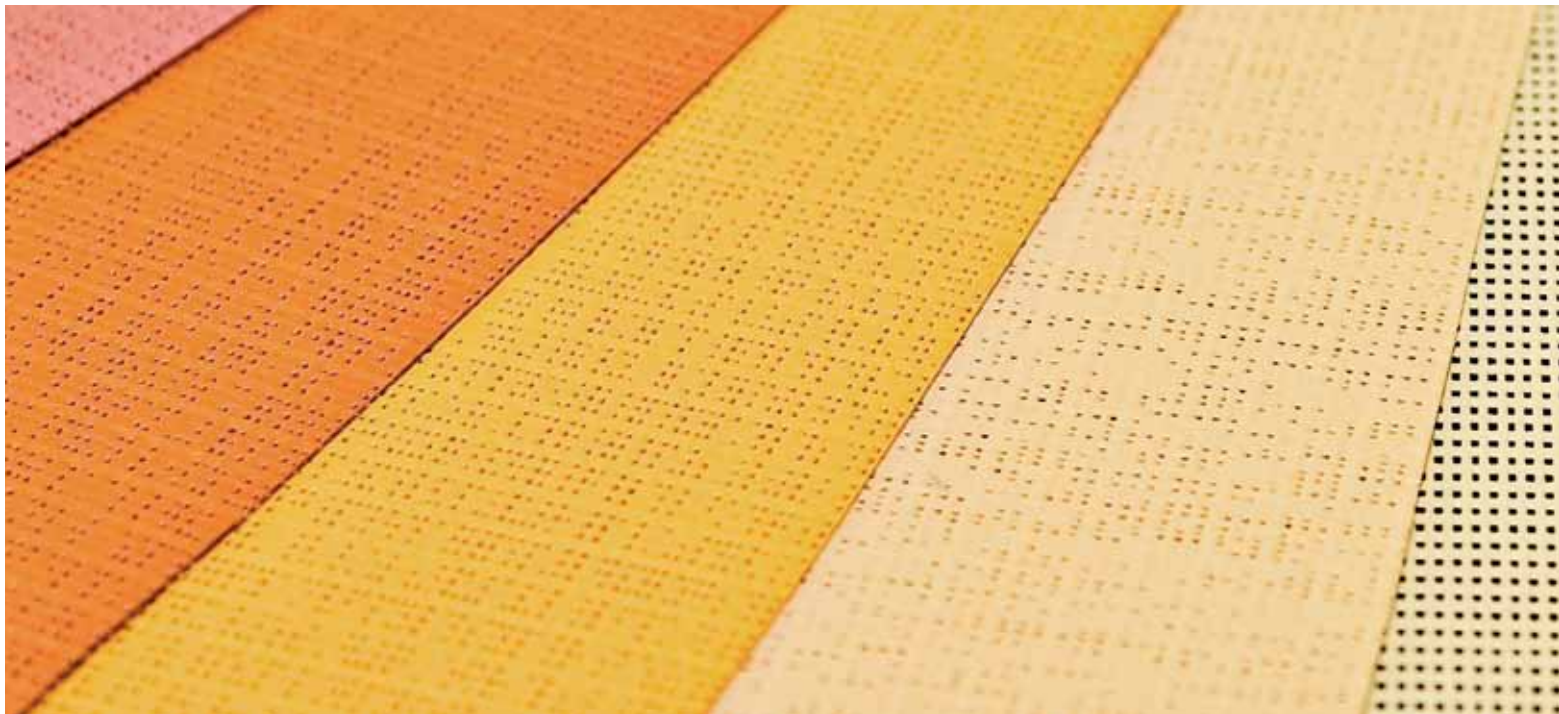
Compromis idéal entre la protection thermique et le confort visuel

Excellente visibilité vers l'extérieur

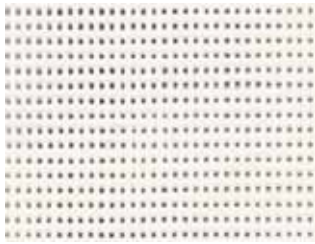
Excellente résistance aux intempéries et aux UV

Léger, résistant, 100 % recyclable

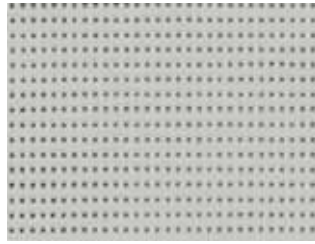
Résistance au feu M1/B1/VKF 5.2/B-s2, d0



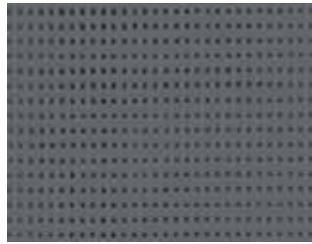
Soltis 86



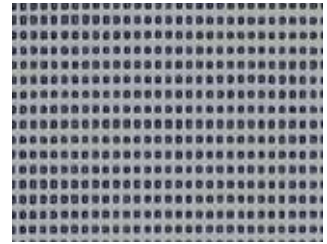
86-2044*



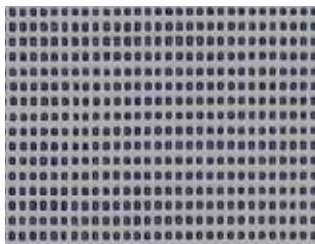
86-2171*



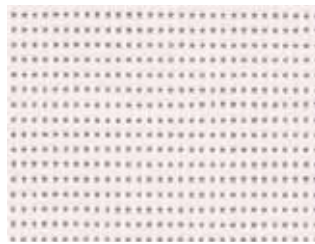
86-2167



86-2048

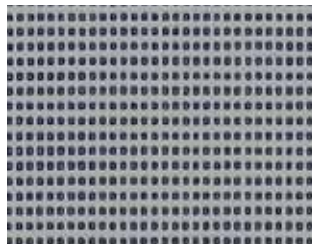


(A)



(B)

86-2046*

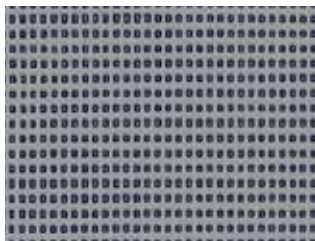


(A)



(B)

86-2068



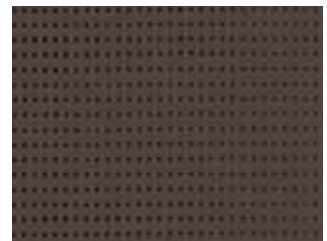
86-2045*



86-2047*



86-2053*



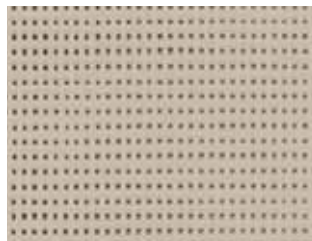
86-2043*



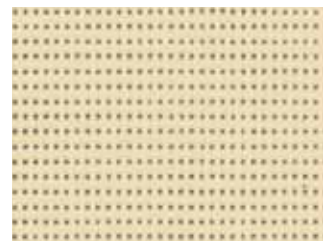
86-2148



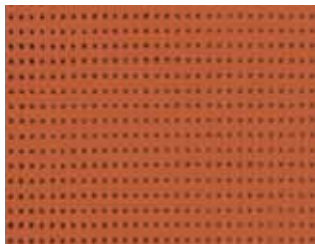
86-2012*



86-2135*



86-2175



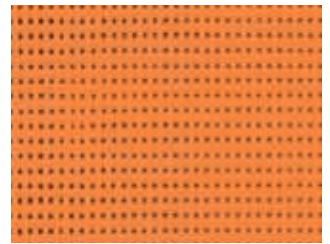
86-50261



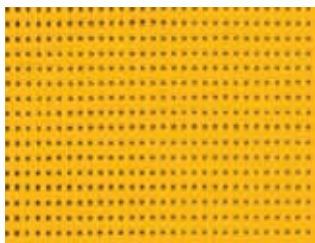
86-50260



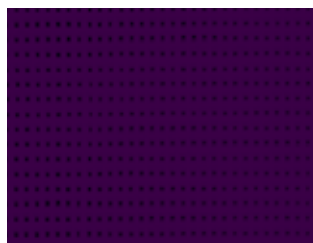
86-8255



86-8204



86-2166



86-50336



86-50342



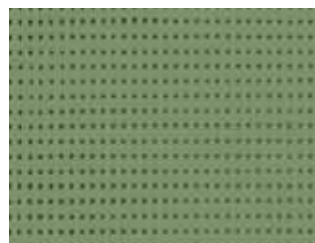
86-2161



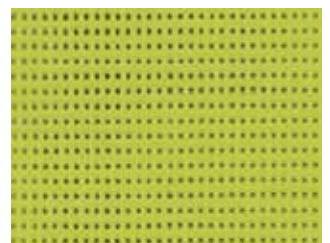
86-50264



86-50271



86-2158

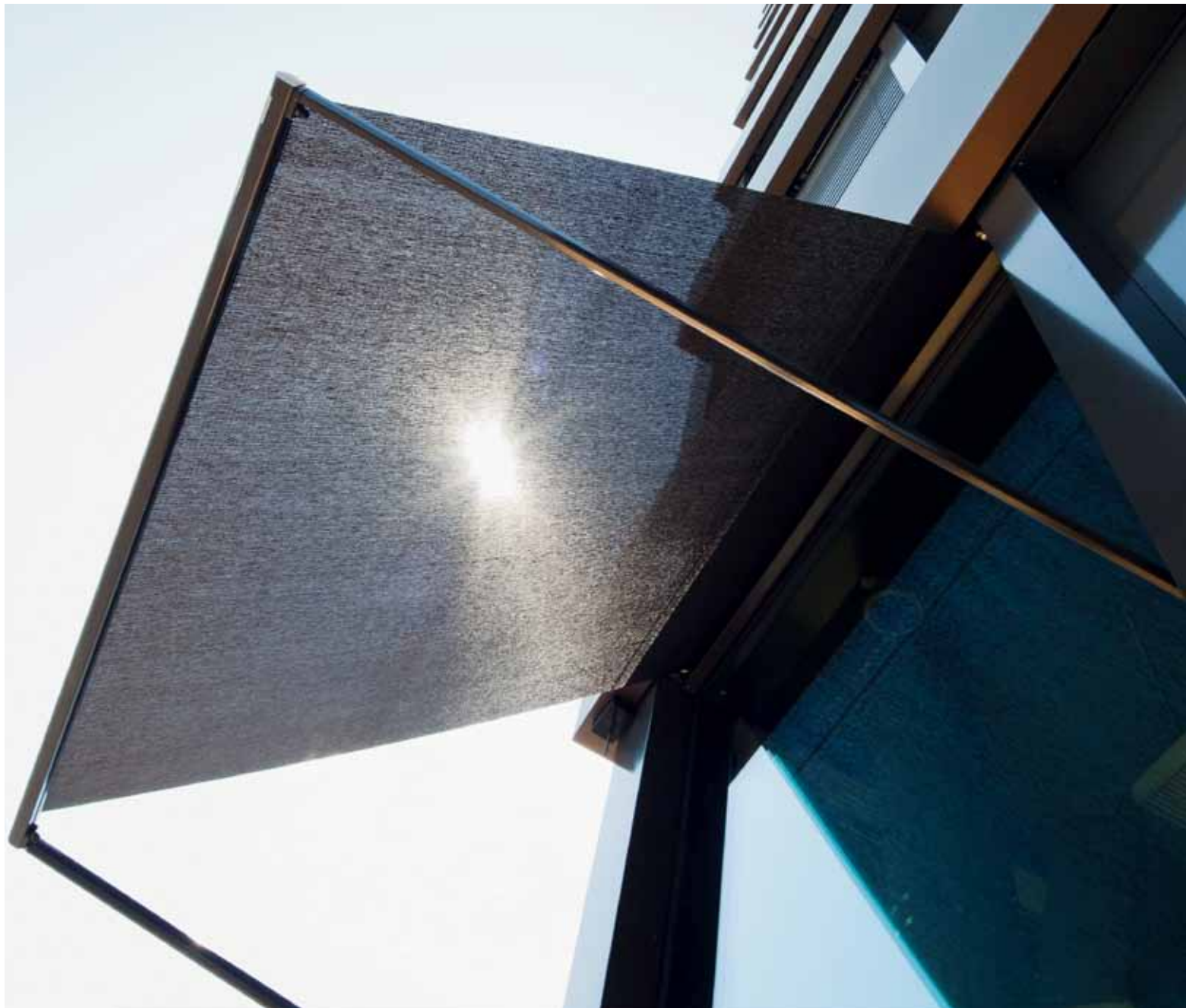


86-50333

Largeur de toile standard : 177 cm

* également disponible en 267 cm de largeur





Soltis 92

Applications

Stores toiles
Stores pour toits de terrasse
Volets

Propriétés

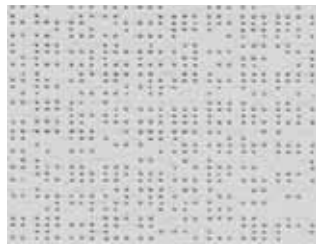
Protection thermique renforcé
Confort visuel et lumineux optimum
Excellente résistance aux intempéries et aux UV
Léger, résistant, 100 % recyclable
Nombreux coloris au choix
Résistance au feu M1/B1/VKF 5.2/B-s2, d0



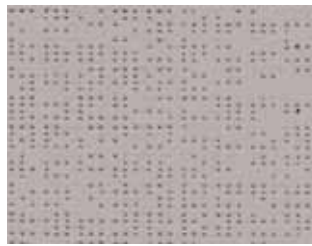
Soltis 92



92-2044*



92-50272



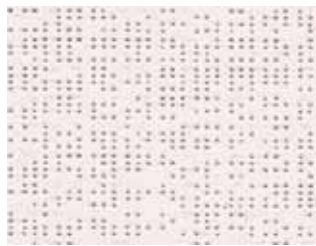
92-2065



92-2171*

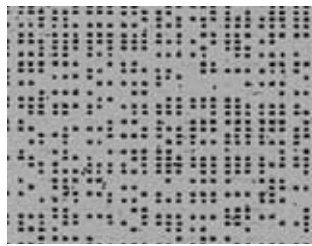


(A)

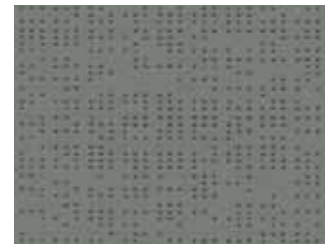


92-2046*

(B)



(A)



92-2074

(B)



(A)



92-2051*

(B)



92-2048*



92-2167*



92-2045*



(A)



92-2068

(B)



92-2047*



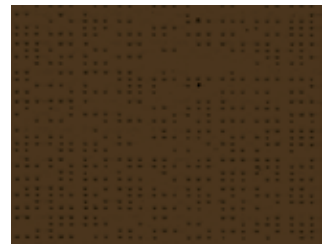
92-2053*



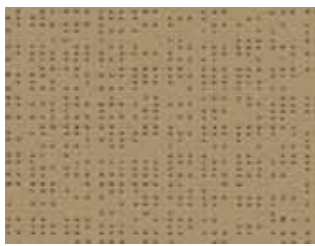
92-2043*



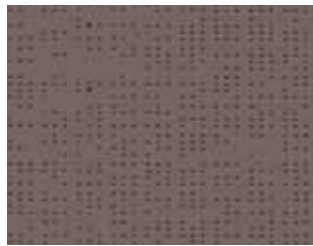
92-2137



92-2148



92-2012



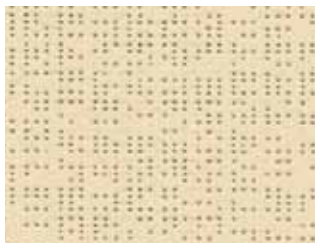
92-50266



92-50265*



92-2135*



92-2175



92-50274



92-50261



92-2172



92-8204



92-50260



92-2152



92-50267



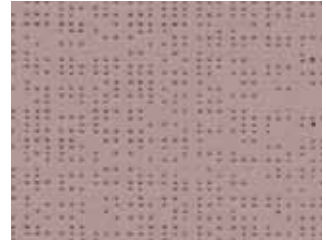
92-8255



92-50268



92-50336



92-2163



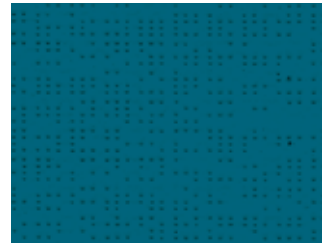
92-2164



92-2161



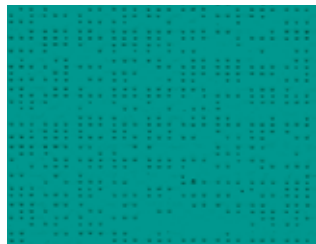
92-50342



92-50270



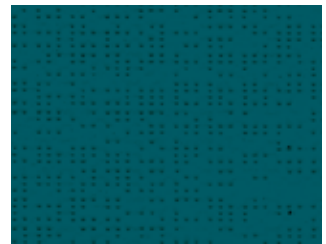
92-2160



92-50271



92-50269



92-50264



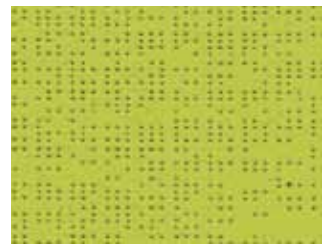
92-2158



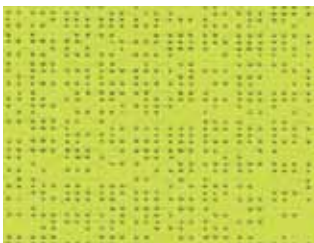
92-2149



92-2039



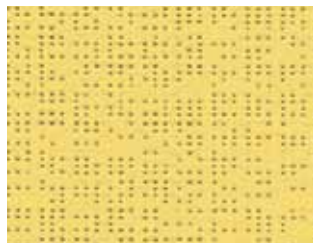
92-50333



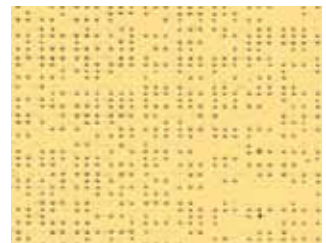
92-2157



92-2166



92-50273

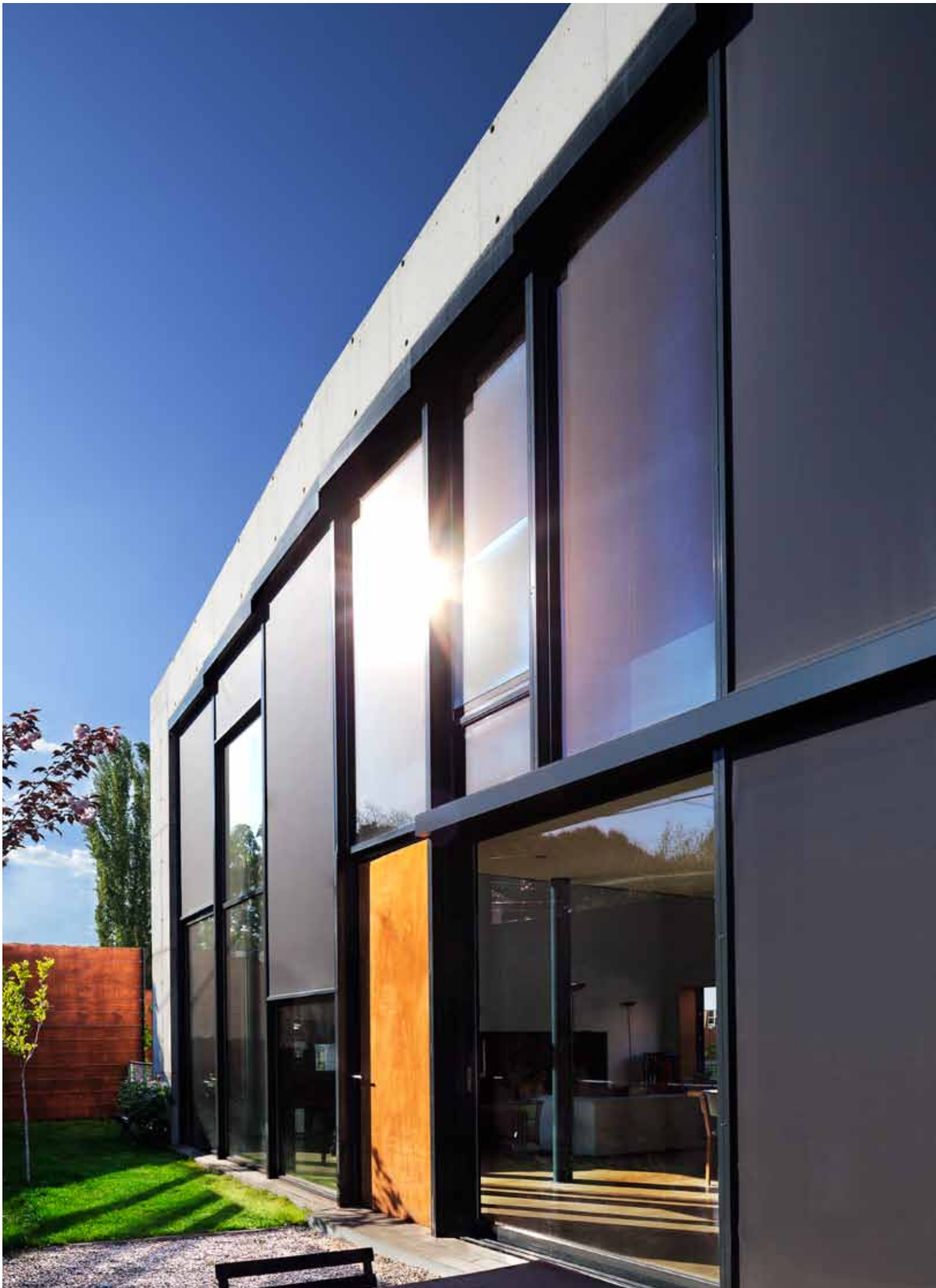


92-2013

Largeur de toile standard : 177 cm

* également disponible en 267 cm de largeur







Soltis 93 / Soltis Low E

Applications Soltis 93

Stores toiles
Stores pour toits de terrasse

Propriétés Soltis 93

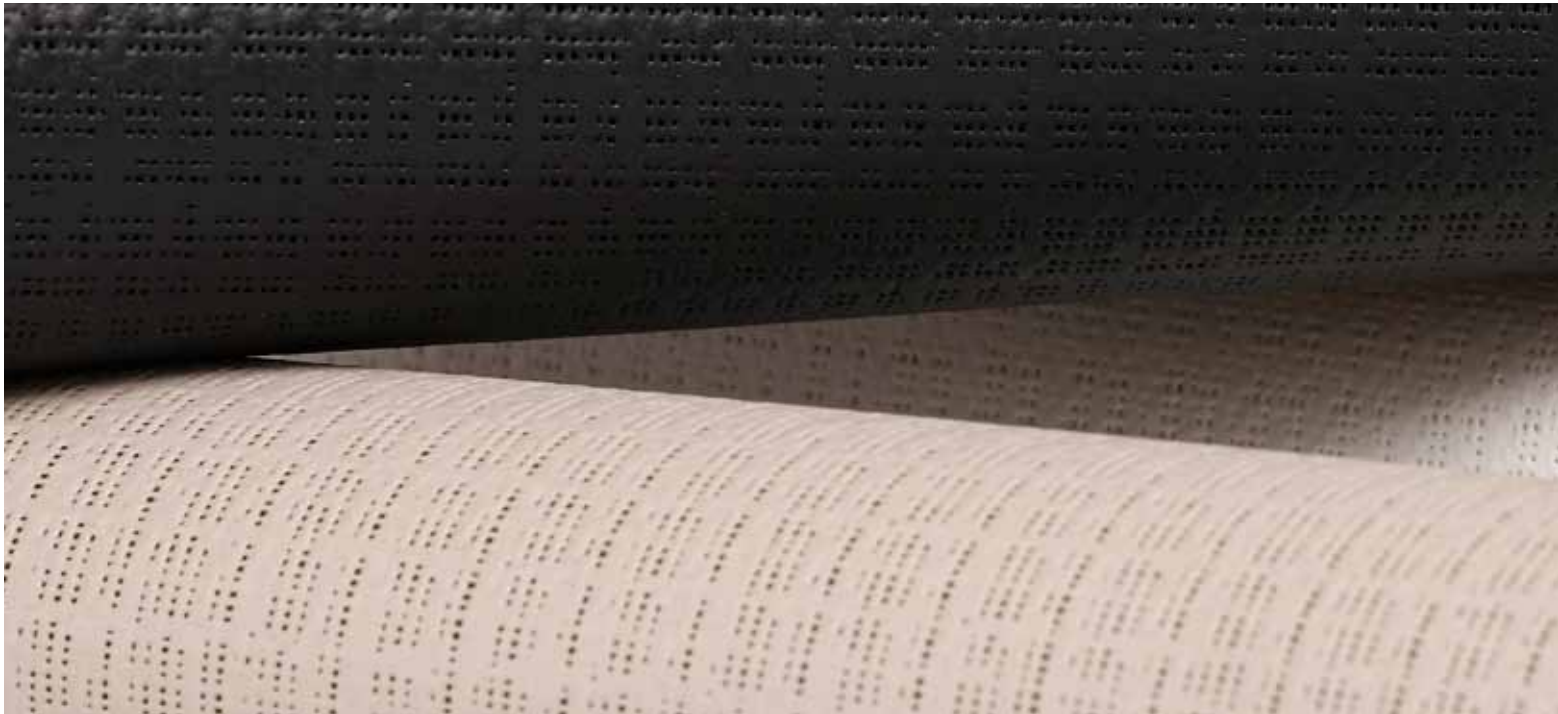
Protection thermique efficace
Excellente visibilité vers l'extérieur
Contexture régulière unique
Léger, résistant, 100 % recyclable
Grand laize pour tous les coloris
Résistance au feu M1/B1/VKF 5.2/B-s2, d0

Applications Soltis Low E

Stores toiles
Stores pour toits de terrasse

Propriétés Soltis Low E

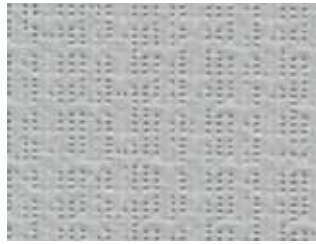
Protection thermique exceptionnelle
Excellente visibilité vers l'extérieur
Excellente résistance aux intempéries et aux UV
Léger, résistant, 100 % recyclable
Réduction des besoins en énergie dans les bâtiments
Résistance au feu M1/B1/VKF 5.2/B-s2, d0



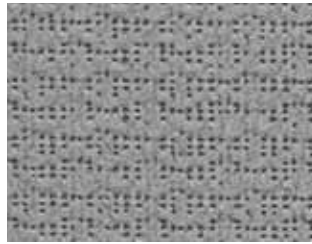
Soltis 93



93-3044



93-3011



93-3045



93-3048



93-3047



93-3053



(A)



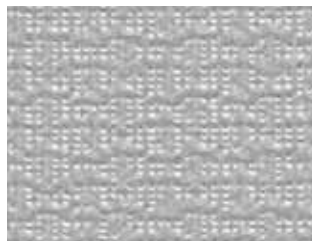
(B)



93-3003



93-3043



(A)

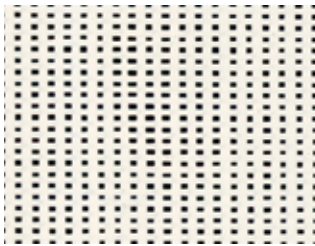


(B)

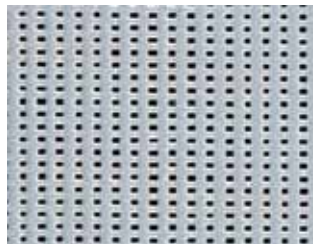
Largeur de toile standard : 267 cm



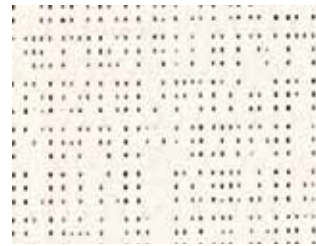
Soltis LowE



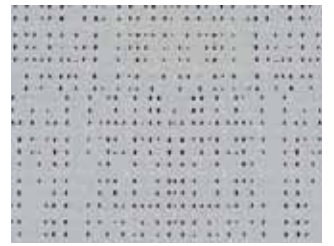
86-2061 E



86-2063 E



92-2061 E



92-2063 E

Largeur de toile standard : 177 cm





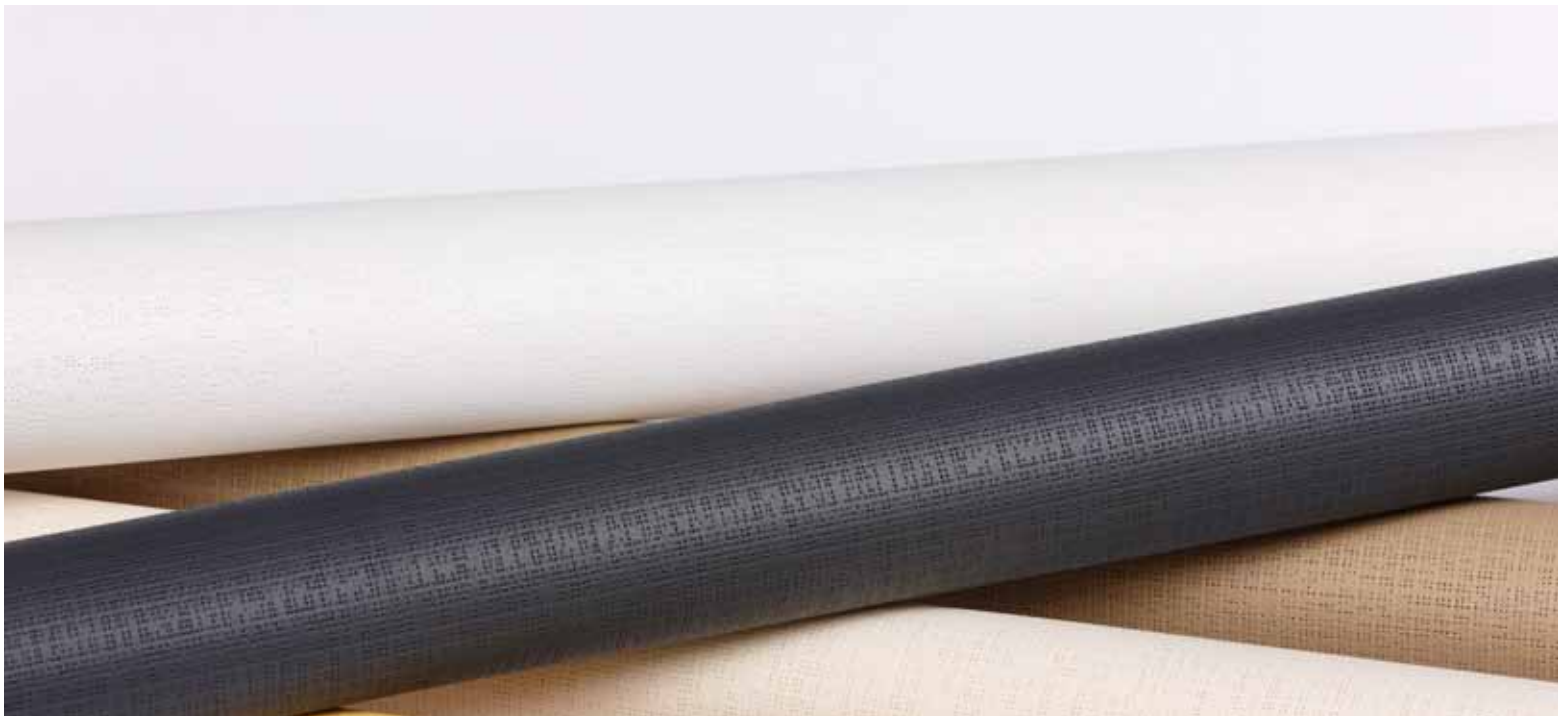
Soltis Black out B92 et B702

Applications

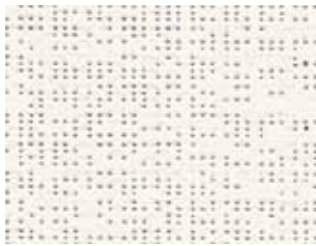
Stores toiles
Stores intérieurs (B702)
Volets (B92)

Propriétés

Obscurcissant ou opaque
Protection thermique efficace
Résistance mécanique élevée
Léger, résistant, 100 % recyclable
Résistance au feu B92: M2/B1/B-s2, d0
Résistance au feu B702: M2/B1/VKF 5.2/B-s2, d0



Soltis Black out B92 et B702

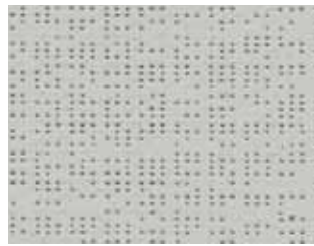


(B)

B92-1044



(A)

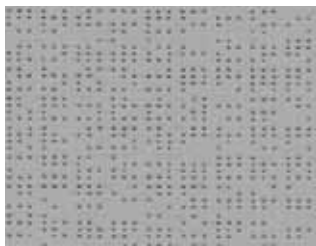


(B)

B92-2171



(A)



(B)

B92-1046



(A)

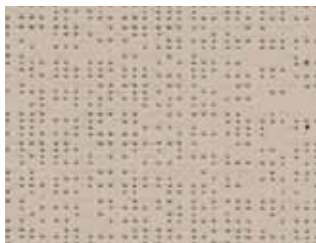


(B)

B92-1045



(A)

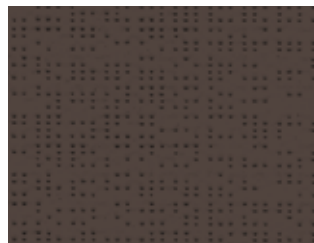


(B)

B92-2135



(A)

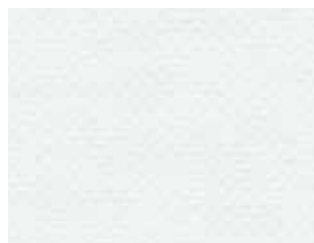


(B)

B92-1043



(A)



(A)

B702-455






(B)




Largeur de toile standard B92: 170 cm
 Largeur de toile standard B702: 180 cm



PROPRIÉTÉS DE LA TOILE – SOLTIS

RÉFÉRENCE	FACE			TOILE				FACTEUR SOLAIRE EXTÉRIEUR	FACTEUR SOLAIRE INTÉRIEUR	
				T _e	R _e	A _e	T _v	g-total _e	g-total _i	
SOLTIS 86										
86-2012		0.38	0.43	0.18	0.27	0.55	0.17	0.15	0.48	M1/B1/VKF 5.2/B-s2,d0
86-2043		0.38	0.43	0.12	0.10	0.78	0.11	0.12	0.53	"
86-2044		0.38	0.43	0.32	0.59	0.09	0.30	0.21	0.38	"
86-2045		0.38	0.43	0.14	0.29	0.57	0.14	0.12	0.47	"
86-2046	A	0.38	0.43	0.21	0.43	0.36	0.20	0.16	0.43	"
	B			0.19	0.58	0.23	0.19	0.14	0.38	"
86-2047		0.38	0.43	0.16	0.07	0.77	0.16	0.14	0.54	"
86-2048		0.38	0.43	0.22	0.42	0.36	0.22	0.17	0.43	"
86-2053		0.38	0.43	0.15	0.05	0.80	0.15	0.14	0.54	"
86-2068	A	0.38	0.43	0.16	0.35	0.49	0.15	0.13	0.45	"
	B			0.16	0.07	0.77	0.15	0.14	0.54	"
86-2135		0.38	0.43	0.20	0.41	0.39	0.20	0.15	0.43	"
86-2148		0.38	0.43	0.14	0.13	0.73	0.14	0.13	0.52	"
86-2158		0.38	0.43	0.15	0.25	0.60	0.14	0.13	0.48	"
86-2161		0.38	0.43	0.16	0.17	0.67	0.14	0.14	0.51	"
86-2166		0.38	0.43	0.30	0.45	0.25	0.26	0.21	0.42	"
86-2167		0.38	0.43	0.15	0.17	0.68	0.14	0.13	0.51	"
86-2171		0.38	0.43	0.19	0.39	0.42	0.17	0.15	0.44	"
86-2175		0.38	0.43	0.28	0.57	0.15	0.26	0.19	0.39	"
86-8204		0.38	0.43	0.27	0.41	0.32	0.19	0.19	0.44	"
86-8255		0.38	0.43	0.23	0.24	0.53	0.17	0.18	0.49	"
86-50260		0.38	0.43	0.15	0.13	0.72	0.14	0.14	0.52	"
86-50261		0.38	0.43	0.21	0.35	0.44	0.15	0.16	0.45	"
86-50264		0.38	0.43	0.17	0.11	0.72	0.16	0.15	0.52	"
86-50271		0.38	0.43	0.21	0.34	0.45	0.15	0.16	0.46	"
86-50333		0.38	0.43	0.22	0.32	0.46	0.19	0.17	0.46	"
86-50336		0.38	0.43	0.19	0.15	0.66	0.15	0.16	0.51	"
86-50342		0.38	0.43	0.16	0.09	0.75	0.14	0.14	0.53	"
SOLTIS 92										
92-2012		0.42	0.45	0.07	0.30	0.63	0.06	0.08	0.46	M1/B1/VKF 5.2/B-s2,d0
92-2013		0.42	0.45	0.18	0.57	0.25	0.16	0.14	0.38	"
92-2039		0.42	0.45	0.03	0.08	0.89	0.03	0.07	0.53	"
92-2043		0.42	0.45	0.02	0.12	0.86	0.02	0.06	0.52	"
92-2044		0.42	0.45	0.20	0.70	0.10	0.19	0.14	0.34	"
92-2045		0.42	0.45	0.03	0.35	0.62	0.03	0.05	0.45	"
92-2046	A	0.42	0.45	0.09	0.48	0.43	0.08	0.08	0.41	"
	B			0.09	0.63	0.28	0.08	0.07	0.36	"
92-2047		0.42	0.45	0.05	0.08	0.87	0.05	0.08	0.53	"
92-2048		0.42	0.45	0.08	0.46	0.46	0.08	0.08	0.41	"
92-2051	A	0.42	0.45	0.10	0.50	0.40	0.10	0.09	0.40	"
	B			0.09	0.70	0.21	0.09	0.07	0.34	"
92-2053		0.42	0.45	0.03	0.06	0.91	0.03	0.07	0.54	"
92-2065		0.42	0.45	0.10	0.46	0.44	0.07	0.09	0.41	"
92-2068	A	0.42	0.45	0.05	0.40	0.55	0.05	0.06	0.43	"
	B			0.05	0.08	0.87	0.05	0.08	0.53	"
92-2074	A	0.42	0.45	0.04	0.38	0.58	0.04	0.06	0.44	"
	B			0.04	0.25	0.71	0.04	0.07	0.48	"
92-2135		0.42	0.45	0.09	0.46	0.45	0.06	0.08	0.41	"
92-2137		0.42	0.45	0.03	0.08	0.89	0.03	0.07	0.53	"
92-2148		0.42	0.45	0.03	0.14	0.83	0.03	0.06	0.51	"
92-2149		0.42	0.45	0.05	0.16	0.79	0.04	0.07	0.51	"
92-2152		0.42	0.45	0.15	0.37	0.48	0.05	0.12	0.45	"
92-2157		0.42	0.45	0.15	0.51	0.34	0.10	0.12	0.40	"
92-2158		0.42	0.45	0.04	0.28	0.68	0.03	0.06	0.47	"
92-2160		0.42	0.45	0.08	0.36	0.56	0.04	0.08	0.44	"
92-2161		0.42	0.45	0.05	0.19	0.76	0.03	0.07	0.49	"
92-2163		0.42	0.45	0.09	0.44	0.47	0.04	0.08	0.42	"
92-2164		0.42	0.45	0.10	0.45	0.45	0.04	0.09	0.42	"
92-2166		0.42	0.45	0.21	0.54	0.25	0.17	0.15	0.39	"

PROPRIÉTÉS DE LA TOILE – COLLECTION SOLTIS

RÉFÉRENCE	FACE			TOILE				FACTEUR SOLAIRE EXTÉRIEUR	FACTEUR SOLAIRE INTÉRIEUR	
				T _e	R _e	A _e	T _v	g-total _e	g-total _i	
92-2167		0.42	0.45	0.03	0.19	0.78	0.03	0.06	0.50	"
92-2171		0.42	0.45	0.08	0.43	0.49	0.06	0.08	0.42	"
92-2172		0.42	0.45	0.19	0.43	0.38	0.08	0.15	0.43	"
92-2175		0.42	0.45	0.19	0.64	0.17	0.16	0.13	0.36	"
92-8204		0.42	0.45	0.17	0.47	0.36	0.08	0.13	0.41	"
92-8255		0.42	0.45	0.12	0.28	0.60	0.04	0.11	0.47	"
92-50260		0.42	0.45	0.05	0.14	0.81	0.04	0.07	0.51	"
92-50261		0.42	0.45	0.15	0.40	0.45	0.06	0.12	0.43	"
92-50264		0.42	0.45	0.05	0.13	0.82	0.04	0.07	0.51	"
92-50265		0.42	0.45	0.09	0.49	0.42	0.06	0.08	0.40	"
92-50266		0.42	0.45	0.04	0.19	0.77	0.04	0.07	0.50	"
92-50267		0.42	0.45	0.06	0.27	0.67	0.03	0.08	0.47	"
92-50268		0.42	0.45	0.16	0.37	0.47	0.05	0.13	0.44	"
92-50269		0.42	0.45	0.09	0.35	0.56	0.05	0.09	0.45	"
92-50270		0.42	0.45	0.04	0.18	0.78	0.03	0.07	0.50	"
92-50271		0.42	0.45	0.08	0.38	0.54	0.02	0.08	0.44	"
92-50272		0.42	0.45	0.12	0.56	0.32	0.09	0.10	0.38	"
92-50273		0.42	0.45	0.08	0.42	0.50	0.05	0.08	0.43	"
92-50274		0.42	0.45	0.08	0.35	0.57	0.04	0.08	0.45	"
92-50333		0.42	0.45	0.11	0.37	0.52	0.07	0.10	0.44	"
92-50336		0.42	0.45	0.07	0.18	0.75	0.03	0.08	0.50	"
92-50342		0.42	0.45	0.06	0.10	0.84	0.04	0.08	0.52	"
SOLTIS 93										
93-3003		0.42	0.45	0.14	0.48	0.38	0.11	0.11	0.41	M1/B1/VKF 5.2/B-s2,d0
93-3011		0.42	0.45	0.12	0.43	0.45	0.10	0.10	0.42	"
93-3043		0.42	0.45	0.06	0.13	0.81	0.06	0.08	0.52	"
93-3044		0.42	0.45	0.22	0.65	0.13	0.20	0.15	0.36	"
93-3045		0.42	0.45	0.07	0.32	0.61	0.07	0.08	0.46	"
93-3046	A	0.42	0.45	0.15	0.43	0.42	0.13	0.12	0.42	"
	B	0.42	0.45	0.15	0.60	0.25	0.13	0.11	0.37	"
93-3047		0.42	0.45	0.07	0.08	0.85	0.07	0.09	0.53	"
93-3048		0.42	0.45	0.09	0.47	0.44	0.08	0.08	0.41	"
93-3051	A	0.42	0.45	0.15	0.47	0.38	0.14	0.12	0.41	"
	B	0.42	0.45	0.15	0.65	0.20	0.14	0.11	0.35	"
93-3053		0.42	0.45	0.06	0.06	0.88	0.06	0.08	0.54	"
SOLTIS LowE										
86-2061 E	A	0.38	0.43	0.18	0.58	0.24	0.17	0.13	0.38	M1/B1/VKF 5.2/B-s2,d0
	B	0.38	0.43	0.18	0.61	0.21	0.17	0.13	0.37	"
86-2063 E		0.38	0.43	0.15	0.60	0.25	0.15	0.11	0.37	"
92-2061 E	A	0.42	0.45	0.04	0.70	0.26	0.04	0.04	0.34	"
	B	0.42	0.45	0.04	0.71	0.25	0.04	0.04	0.33	"
92-2063 E		0.42	0.45	0.05	0.69	0.26	0.04	0.04	0.34	"
SOLTIS BLACK OUT										
B92-1043	B	0.65	0.60		0.12	0.88		0.05	0.52	M2/B1/VKF 5.2/B-s2,d0
B92-1044	B	0.65	0.60		0.72	0.28		0.01	0.33	"
B92-1045	B	0.65	0.60		0.35	0.65		0.03	0.44	"
B92-1046	B	0.65	0.60		0.49	0.51		0.03	0.40	"
B92-2135	B	0.65	0.60		0.47	0.53		0.03	0.41	"
B92-2171	B	0.65	0.60		0.45	0.55		0.03	0.41	"
B92-Verso	A	0.65	0.60		0.29	0.71		0.04	0.46	"
B702-455	A	0.75	0.60		0.72	0.28		0.02	0.33	M2/B1/VKF 5.3/B-s2,d0
B702-455	B	0.75	0.60		0.06	0.94		0.05	0.53	M2/B1/VKF 5.3/B-s2,d0

Tous les données correspondent aux faces exposées au soleil.



Légende



Epaisseur



Classement au feu

M1/NFP 92-507

M2/NFP 92-507

B1/DIN 4102-1

VKF 5.2/SN 198898

VKF 5.3/SN 198898

Euroclass B-s2, d0/EN 13501

T_e = facteur de transmission solaire

R_e = facteur de réflexion solaire

A_e = facteur d'absorption solaire

T_v = facteur de transmission lumineuse

$g\text{-total}_e$ = facteur global de transmission d'énergie pour une protection solaire extérieure „fermée“ avec vitrage, calcul selon SN EN 13363-1-A1, vitrage de référence C selon EN 14501, $g = 0,59$, $U = 1,20$ [W/°K]

$g\text{-total}_i$ = facteur solaire intérieur - vitrage de type C selon EN 14501, $g = 0,59$, $U = 1,20$ [W/m²K]





www.griessergroup.com



FSC® C018740